

Excellent value, simple operation



08/23/06 04:16		100.0 g		→0←	
PLUS	[109.0 - MAX]			0	
GOOD	[91.0 - 109.0]			0	
MINUS	[0.0 - 91.0]			0	
SPECIAL				0	
TOTAL				0	
memory locations	article data	counters	belt speed	configuration	
article 4	tare: 0.0 g	0 pcs/min	100.0 g		
Start/Stop Motors: F9					

40 memory locations

Allows for quick and easy product changeovers through an easy to use color touch screen display.



Rugged design

For dependable results in all industries. Even under demanding conditions.

Reliability and low cost of ownership

This checkweigher is designed for basic checkweighing operations. With three weight zones for classifying underweight, good, and overweight products, it has a weighing range up to 6000 grams.

A color touch screen user interface features simple, intuitive operator controls plus convenient display of important production information and history.

9473

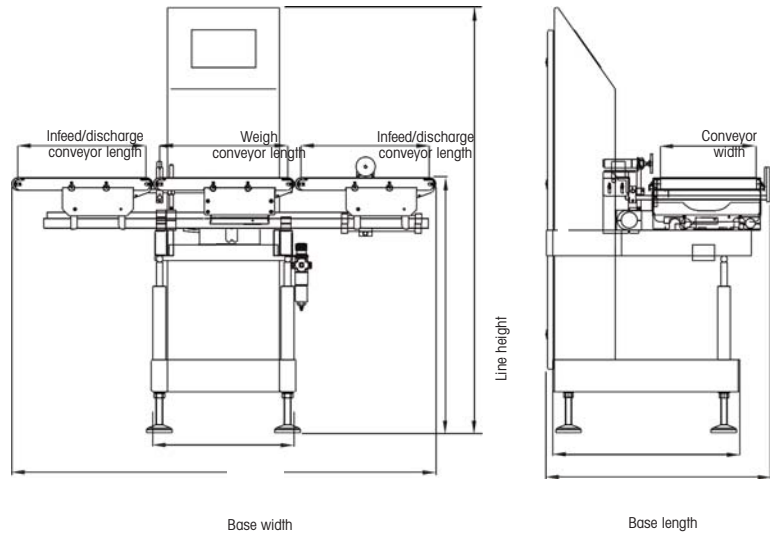
- good value for the money. Rugged and compact design.

Standard features

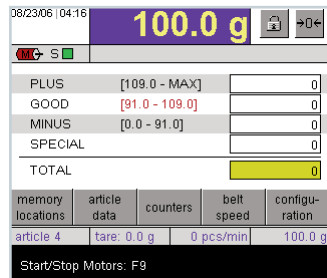
- 5.7" diagonal color touch screen user-interface
- 320 x 240 pixel (QVGA) resolution
- Simple and intuitive menu navigation
- 40 product memory
- 3 weight classification zones
- Service password protected multi-user access
- Selectable primary and secondary screen language – 23 languages are supported
- Stainless steel and aluminum construction
- Ingress protection to IP54 specifications

Options and accessories

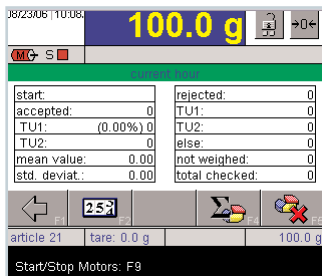
- Statistics
- PrintStick Reader PC software
- Weight data interface; Ethernet TCP/IP, Serial RS232
- 3 Segment stacklight for weight classification
- Air blast reject



9473 typical schematic



9473 Main Screen
(shown With Text Function Keys)



Current Hour Statistics Screen
(Shown With "No Text" Function Icons)

Technical data

Technical data	9473																
Weighing range, specific to article weight*	Maximum capacity 6000 g																
Accuracy**	From ± 1 g																
Resolution	0.1 g																
Throughput (weighings/minute)**	Maximum 100																
Line height	750 – 950 mm ± 30 mm																
Base width	440 mm																
Base length	585 mm																
Roller diameter	38 mm																
Standard sorting/rejecting device	Air actuated push off																
Compressed air supply	60 to 115 psi																
Power requirements	100/230 VAC (auto-detect input), 50/60 Hz, single phase, 450 VA																
Conveyor belt (mm)	<table border="1"> <thead> <tr> <th></th> <th colspan="3">Length</th> </tr> <tr> <th></th> <th>Infeed</th> <th>Weighing</th> <th>Discharge</th> </tr> </thead> <tbody> <tr> <td>Width 200</td> <td>250</td> <td>250</td> <td>250</td> </tr> <tr> <td>300</td> <td>400</td> <td>400</td> <td>400</td> </tr> </tbody> </table>		Length				Infeed	Weighing	Discharge	Width 200	250	250	250	300	400	400	400
	Length																
	Infeed	Weighing	Discharge														
Width 200	250	250	250														
300	400	400	400														

Note: Conveyor width and length are fixed and not interchangeable.

* Depends on the design and dimensions of the weighing belt used
 ** Depends on the weight, dimensions, and transport of the product to be weighed



METTLER TOLEDO

1900 Polaris Parkway
Columbus, Ohio 43240

Toll Free: 800-836-0836

e-mail: MT-NA Industrial Sales@mt.com

Subject to technical changes
 ©2008 METTLER TOLEDO
 Printed in U.S.A.

www.mt.com

For more information